

Peoples Empowerment Group

ISB&M



International School of Business & Media

Pune : Nande - Mulshi

Kolkata

Bangalore

Fly High in a Career!

INFORMATION BULLETIN 2023



Bindiya Naulakha | 2001-03 | COO - CFO Treasury
Credit Suisse | Singapore

**High
Quality
Placement**

ISB&M at

**High Compensation
for fresher
Up to 15 lacs**

High Quality Recruiters

Ankit Kapree
Batch : 2020-22
Campus
Placement :
17.2 Lacs
TresVista



**EMPOWER YOURSELF
&
FAMILY
ECONOMICALLY**

**Look FORWARD
To
GREAT Opportunity**



Trident Group
15-18 Lacs CTC Batch : 2019 - 21
Freshers & Over 2 Years Work Ex.



Vishwa Prakash
Batch : 2018-20
Campus
Placement :
21 Lacs
Trident Group

**GET READY
To
LEARN AND
PERFORM**

A Glance

AMONG THE BEST AN INTELLECTUAL DEVELOPMENT AND ACADEMICS

- ➔ Benchmarked Learning & Programmes Structure
- ➔ Highly qualified faculty

CAREER DRIVEN APPROACH



CAREER WITH THE WORLD'S BEST EMPLOYERS & COMPANIES

- ➔ Grow in Leadership Roles
- ➔ Grow into Global Roles
- ➔ Best Companies
- ➔ Financially Rewarding & High Quality Life Style



Washington

Deepratna Singh (2004-06)
Sr. Director, HR Walmart Global Tech

Highly Active, Outgoing & Liberal Culture

- ➔ Promotes Modern Attitude & Values
- ➔ Promotes Competitive Standard & Aspiration for Career
- ➔ Culture of Equality, Egalitarianism & Mutual Respect

LIBERAL CAMPUS CULTURE



Salient Features

ISB&M Campus Recruitment

ISB&M Campus recruitment is strategically planned with the following objectives

- 1 A job for every student who wants a campus placement (few go back to family business)
- 2 Company Brand & Compensation positioning for high profile career value & economic value.
- 3 New age recruiters where you get posting in US / Europe / Dubai / Singapore within a short time (1 to 3 Years).

Our Recruiters include

- a New Age Recruiters - These include investment, big data, technology, ecommerce, consulting & diversified groups
e.g. TresVista, The Adecco Group, Hewlett Packard, Sutherland Global, Trinamix, Schlumberger, Rosy Blue (ORRA Diamond), Alten, GEP Worldwide, Hotstar, Trident, HCL, Hector Beverages & Many More...
 - Fast paced career growth with Global posting.
 - High Compensations & economic value, going up to 18 Lacs CTC in India.
- b Core Sector recruiters include FMCG, Engineering companies, Giant Indian groups, ITC, Colgate, Asian Paints, Nivea, UB Group, Raymond.

Supportive Culture in Placement to help you :

- 1 Cope with pressure of placements.
- 2 Prepare you for high profile companies
 - Workshops
 - Coaching & Counselling
 - Communication & body language

Forthcoming Companies on Campus Placement Batch : 2021-23

List of Recruiters

Adani Group
Adani Wilmar
Alight Solutions
Bajaj Finserv
Bombay Shaving Company
CBRE
Deloitte Consulting
Deloitte Taxation
Ernst & Young
Hexaware Technologies
ICICI Bank
IDFC Bank
PwC
Repos Energy
Sutherland Global
The Edge Partnership
TresVista
Volvo Eicher
Wipro
Zycus
Henkel
Korn Ferry
Tata Bluescope Steel
Lodha Group
Options Group Mars
Scrabble
Imerys
KPIT

Illustrative Recruiter List till 30th Sep. 2022

This list is at the time of Printing this bulletin :
will get better progressively

Page 4: www.isbm.ac.in

Final Placement : 2021-23



Lakshmi Nori

Hexaware Technology

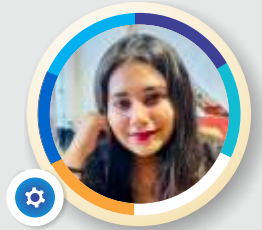
Eluru - AP



Aman Haider

Deloitte Taxation

Varanasi



Nikita Nigam

Deloitte Consulting

Indore



Sanjana Kale

Deloitte Consulting

Indore

Awards and Ranking

Awards



www.economic-times.com

Awarded with
Outstanding Performance in Education

Economic Times 2022



Awarded with
VISIONARY LEADERS
TIMES OF INDIA GROUP
20 June 2022



Awarded with
ICONS Of Leadership
Business Today
12 January 2022



www.economic-times.com

Awarded with
Most Influential Leaders
Economic Times
30 July, 2022.

Ranking



1st ranked best B-School for Academic Excellence, 2022

Source: Pune Times Mirror Edu. Excellence 30th Aug 2022



2nd Position in Pune Pvt. Institute

Source: Times B School Ranking of TOI Dated 24th Feb 2022



5th Position in Top 100 Pvt. Institute

Source: Times B School Ranking of TOI Dated 24th Feb 2022



Ranked 21 among Top private B - School in India

Source: The Business Standard 2022

In an effort to benchmark and learn, we continuously explore and make efforts to strive towards objective driven, meaningful education for individual development and career orientation.

Our efforts are inspired by the caring philosophy of IVY League universities.

- ▶ **Creating Champions**
- ▶ **Lifelong success**
- ▶ **Excellence in Education**

Intellect that Competes

Debate & Case Studies

HOST INSTITUTE : ASIA INC 500 CONCLAVE



Event :
SPEECH ELOCUTION
POSITION : WINNER

COMPETITORS : NMIMS, IIM B, JBIMS

HOST INSTITUTE : ISB&M PUNE



Event :
NATIONAL INDEPENDENCE
DAY DEBATE
POSITION : WINNER

COMPETITORS : SIBM, JBIMS, NMIMS

HOST INSTITUTE : SIIB, PUNE



Event :
UPAAY' 18 CASE STUDY
POSITION : 3rd position

COMPETITORS : IIM A, IIM B, IIM C, IMT
GHAZIABAD, MDI, NIRMA, SIMC

HOST INSTITUTE : IIM UDAIPUR



Event :
FINOMANIA-FINANCE
SIMULATION
POSITION : TOP 5

COMPETITORS : IIM UDAIPUR, NMIMS, IMT

HOST INSTITUTE : NMIMS MUMBAI



Event :
RAJNEETI SHASHTRA
POSITION : TOP 5

COMPETITORS : SIBM, KJ SOMAIYA, IIM
SHILLONG, IBS HYDERABAD, NITIE

HOST INSTITUTE : TAPMI- MANIPAL



Event :
HR CASE STUDY
POSITION : WINNER

COMPETITORS : IIM A, IIM B, IIM C, SIBM,
TAPMI.

HOST INSTITUTE : IIM - BANGLORE-VISTA-'18



Event :
RETAILER-MARKETING COMP.
POSITION : 3rd position

COMPETITORS : IIM-B, IIM INDORE, CHRIST,
NMIMS

HOST INSTITUTE : ISB HYDERABAD



Event :
INFRABIZ-CASE STUDY
POSITION : 2nd position

COMPETITORS : IIM A, IIM INDORE, BHU
VARANASI & SCMHRD, PUNE

HOST INSTITUTE : NMIMS INDORE



Event :
MARKLOGIX 1.0 BRANDWISER
POSITION : TOP 4

COMPETITORS : IMI DELHI, NMIMS MUMBAI,
IIM BODHGAYA & IIM UDAIPUR

HOST INSTITUTE : IIM BANGALORE



Event :
Retailer - Marketing
Competition
POSITION : 3rd Prize

COMPETITORS : NMIMS, IIM B, JBIMS

CNN - MONEY Research 2022, USA

Google
Goldman Sachs
Ernst & Young
Deloitte
KPMG
PwC
Apple
McKinsey & Company
JP Morgan
Microsoft
Boston Consulting
Group
L'Oreal
Amazon
Morgan Stanley
Adidas Group
Procter & Gamble
BMW Group
Nike
Coca-Cola
Bain & Co.

You can Find
ISB&Mites
among them

Where do Top B-School Student Aspire to be Employer Preference for MBA Students from globally best B-Schools.

“

World's Top Employers for New Grads- ISB&M boasts of global achiever Alumni, working with the best of companies, preferred by graduates from world's Top B-Schools

ISB&M Alumni
Share 90% in world's
Top 20 Most
Preferred Employers by
World's
Best
MBAs

For More Details Visit Website
www.isbm.ac.in

Outstanding Alumni Across Over 20 Countries

Alumni in Leadership Roles - Directors and VP - In India, USA, Europe, Australia, Singapore etc.



Singapore

Shubha Shridharan

Group SVP HR - APAC

The Adecco Group



Singapore

Krishna Chaitanya G

Senior Director

JLL



California

Sanghita Majumder

Senior Director

The Trade Desk



Singapore

Pronob Chetia

Director - HR

Volvo Group



Florida

Ankita Pandey

Financial Sol" Advisor

Bank of America Merrill Lynch



Mumbai

Ritesh Samtani

Director

Mastercard



New York

Abhishek Bhatt

Senior Director

CNBC



Hyderabad

Aparajitha Mahaswetha

Associate VP

Citi Bank



Washington

Astha T

Data & Applied Scientist

Microsoft



Netherlands

Zenobia Madon

Director - HR

Whirlpool



Scotland

Amrisha Soans

Vice President

Morgan Stanley



Mumbai

Shraddha Mehta

Director

Morgan Stanley



**Creative,
Committed
&
Hard-Working
Team**

**Decisive moments
and actions shape your
education at**

ISB&M.

Dr. Pramod Kumar
President



Operating Philosophy

- Always look for and follow the best practices and standards.
- Operate with spirit of responsibility, liberty, integrity and openness.
- Develop a sense of partnership among all.

Ph.D. (Organizational Behavior), IIT Bombay, Formerly with IIM Ahmedabad, Former Chairperson Placement XLRI, Jamshedpur; Ex-Director, Symbiosis Institute of Business Management, Pune; Consultant to over 80 companies worldwide. Author of over 100 research papers, cases and management games. Research quoted internationally in textbooks and journals. Served on Government of India Committees on Management Education.

Our Leadership TEAM

Dr. Saroja Asthana
Founder,
Mulshi Group of
Institutes



Ph.D.(IIT Kharagpur) M.S. (USA). Contributor to Nobel Peace Prize 2007 to IPCC. Former Faculty at XLRI Jamshedpur & NCL Pune. Consultant to IPCC, SDC, GTZ, UNFCCC, Ministry of Environment and Forests, GOI and several industries globally. Author of several highly reputed research papers.

Dr. Veerendra K Rai
Director,
ISB&M Nande Pune



Ph.D., Industrial & Systems Engineering, IIT Kharagpur, MS Computer & Information Science, NJIT USA.

Was Principal Scientist with Tata Research Development and Design Center (TCS). With 30 years' experience in Business Systems & Cybernetics, Business Policy, Program Mgmt. &

IT service management. Has several publications & patents. Member of IEEE Systems, Man and Cybernetics (SMC), life member of Systems Dynamics Society. Served on program committee of numerous conferences including IEEE and edited Elsevier Journal of Electronic Commerce Research & Application (ECRA).

Dr. S. Jayaraman
Director,
ISB&M Bangalore



Ph.D AMU, PGDBM, IIM –Calcutta.

Former Group Head (HR, Admin & Quality), IRIS Ltd.; Former Dy. Div. Manager, TATA Metaliks Ltd. 16 years of experience in teaching and MDP's and over 27 years work experience in diverse industries ranging from automobiles, construction, Iron & Steel and IT services and

has held senior level positions in TATA Metaliks and IRIS Business Services Limited. Specialized in the area of HRM, OB & TQM Consultants to leading organizations, also well versed in psychometric testing.

Prof. Arpita Roy
Director,
ISB&M Kolkata



M. Sc. (Economics), University of Calcutta; M.Phil. (Economics), Jadavpur University Over 18 years of teaching experience. She has also worked as corporate trainer for organizations like LIC, TIL.

Seek Inspiration from **Business Leader**

“

At ISB&M, you learn and guided by business leaders & entrepreneurs of eminence from across the globe. They inspire you as role models & shape your ambition in life



V. K. Bansal
Chairman - India
Investment Banking
Morgan Stanley



Manoj Kohli
Country Head
**Softbank Group
International**



Madhavi Lall
MD, Head - HR
**India Deutsche
Bank**



Sanjay Mathew
Senior Director -
Head
Oracle



Manish Prabhu
Director
Microsoft



Rohin Nadir
Director; HR,
National Head
KPMG



Ashish Chandra
Chief Executive
Officer
Bharti Airtel



Divya Pathak
Director of Publicity
Netflix



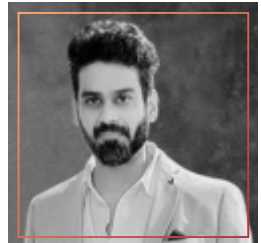
Anil Bhasin
President
Havells



Sandhya Sharma
CFO,
India & South Asia
Schindler



Eric Tinch
Sr. Vice President,
HR and GDT
Sutherland



Lokesh Sikka
Director, CHRO,
Vice President
Onida

Faculty

Understand High Standards
in Education & Learning

Highly Qualified Faculty with education & Experience in Institution of high reputation e.g **IITs, IIMs, XLRI, S. P. Jain, JNU, BITS Pilani, MDI, FMS, Delhi University, GIM, TISS** and best of Institutions.

An illustrative list of faculty from all campuses



Prof. Navin Verma

M.Tech. IIT
Kanpur,
Lean Six Sigma
Black Belt, CPIM
and CSCP in
SCOM from
APICS, USA



Dr. Subhasis Bera

M.Phil. &
Ph.D.- JNU
M.A. Economics,
Specialization in
Statistics &
Econometrics
UGCNET.



Dr. Neha Arora

Ph.D, in
International
Business, Delhi
School of
Economics, Delhi
University
NET-JRF.



Prof. MI Abha

MBA (IIM
Rohtak), UGC
NET B. Tech.
Mechanical
Engineering

KOLKATA CAMPUS

ISB&M Kolkata started its campus in the year 2004 and over 2000 students have graduated from this campus. Our alumni can be found in senior positions in top ranking business organizations both in India and Abroad.

ISB&M Kolkata is having state of the art infrastructure coupled with hostel facilities for students. ISB&M culture has always created leadership talent.

ISB&M Kolkata is a big brand in Kolkata. Over fifty hotspots live music, stunning light installation, wide range of spirits and food makes Kolkata night life a winner. The metro city night live buzzes with the best gigs, a GenZee crowd set dance floor on fire.

Few will compare in term of learning and career building.

ISB&M Kolkata Offers AICTE Approved PGDM (Dual - Specialization Programme)

- Marketing
- Finance
- Human Resource Management
- Business Analytics
- Logistics & Supply Chain Management
- Media & Communication

Akash Awasthi
Director
Deloitte
Qatar

Batch: 2006-08



PUNE NANDE CAMPUS

Established in year 2000, International School of Business and Media has made rapid strides over the last 23 years. The landscape of lush green hills gives the institute an enriched life and experience. Teaching methods involve case studies, simulations, experiential learning. Aims to develop thinking, decision making and executive leadership capability. It's learning all over-in classroom, project & assignments, campus life, environment

ISB&M Nande Offers AICTE Approved PGDM (Dual - Specialization Programme)

- Marketing
- Finance
- Human Resource Management
- Logistics & Supply Chain Management
- Business Analytics
- Media & Communication

Anupama Chaudhury
**Senior Director -
Global Talent
Acquisition**
Sutherland, Delhi



Batch: 2001-03

BANGALORE CAMPUS

Multiple opportunities, await you at ISB&M, Bangalore. You can take up a Technology Incubation and become the next Mark Zuckerberg or Steve Jobs. Or, you can pick up jobs with some of the most dynamic MNCs in the World. However, where-ever you work, you will bring Dramatic Innovations and Creativity, to make a huge impact at the workplace, based on your learning at ISB&M.

ISB&M Bangalore, with the backdrop of a hill, offer an impeccable lush green environment far from the urban crowd ideally conducive for academic learning.

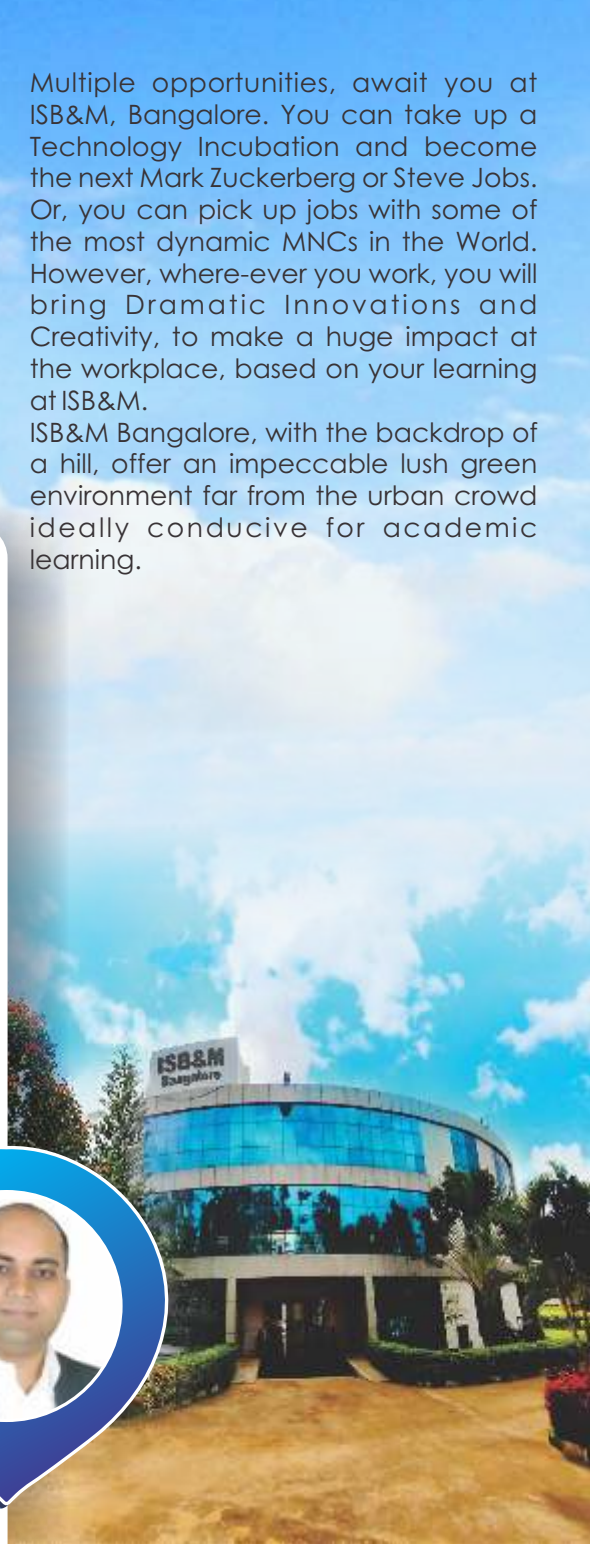
ISB&M Bangalore Offers AICTE Approved PGDM (Dual - Specialization Programme)

- Marketing
- Finance
- Human Resource Management
- Logistics & Supply Chain Management
- Business Analytics

SAURAV ROY
Executive VP HCM
Yes Bank Ltd.
Mumbai



Batch: 2006-08



PUNE MULSHI CAMPUS

Mulshi Group is promoted and managed by ISB&M, Nande Pune. Mulshi a location 30 minutes drive from Nande. Mulshi Institute of Business Management is an ideal Place of learning of education. MIBM believes that pursuing our mission through excellence in education, research & service would create a niche for us among the management institutes. MIBM is a dynamic and diverse institute. We have an impressive infrastructure and a fully furnished library with almost 10,000 e-journals and hard copies, also an optional residential hostels for boys and girls. The institute promises quality education and degree that will find recognition at international level.

MIBM **Offers AICTE Approved PGDM** **(Dual - Specialization Programme)**

- Marketing
- Finance
- Human Resource Management
- Logistics & Supply Chain Management
- Media & Communication
- Business Analytics

Anushka Mishra
Hewlett Packard
Enterprise
Bangalore

Batch: 2020-22



Beyond The



ROI is too little to look for from
your Management Education.

**Build Lifetime economic value &
High profile life style.**



Ramola Philips
Batch : 2002-04

DUBAI, UAE



Rahul Chandra
Batch : 2008-10

United Arab Emirates

Go Global



Bhavya Bharti
Batch : 2017-19

Gurgaon, India

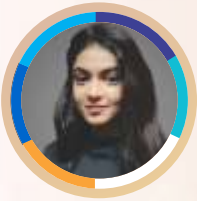
You can Have ROI & Failed Life –
Look Beyond

At ISB&M Expect good thing to happen
in lifelong.

Don't Fall Prey to Misguidance, research
ISB&M

For More Details Visit Website
www.isbm.ac.in

INTERNATIONAL CAREER & REWARDING LIFE



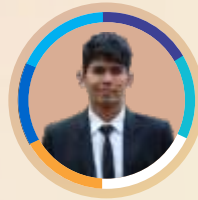
Anamika Singh
Batch: 2019-21
Sr. Business
Development Consultant
GEP Worldwide
London



Palak Mundra
Batch: 2018-20
Associate Talent
Search
Meytier Inc.
New York



Sahil Deorukhakar
Batch: 2017-19
Global Business
Development
Nitor Infotech
New Jersey



Mohit Kumar
Batch: 2016-18
Data Analyst
Publicis Canada
Toronto



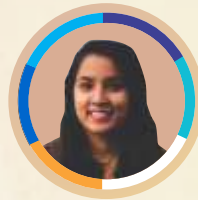
Surbhi Sood
Batch: 2015-17
SEO Specialist
BAM Strategy
Canada



Milisha Nambiar
Batch: 2014-16
Consultant -
Recruitment Cloud
Robert Walters
Australia



Varsha Samantray
Batch: 2014-16
SDR - APAC
Lucid Software
Australia



Shyly Bhawe
Batch: 2014-16
Business Analyst
Atos syntel
London



Reys James
Batch: 2013-15
HRBP
Amazon
Columbia, Canada

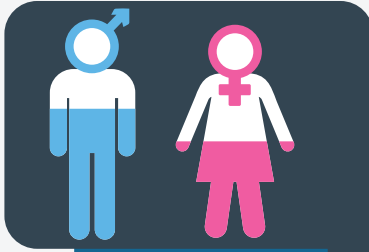


Ritvi Soni
Batch: 2012-14
Universal Banker
HSBC
London

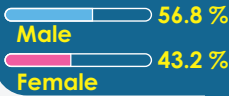
Several ISB&M Alumni Get Foreign Posting within 2 to 4 years

National Reach Among Students.

DIVERSE BATCH PROFILE 2022-24



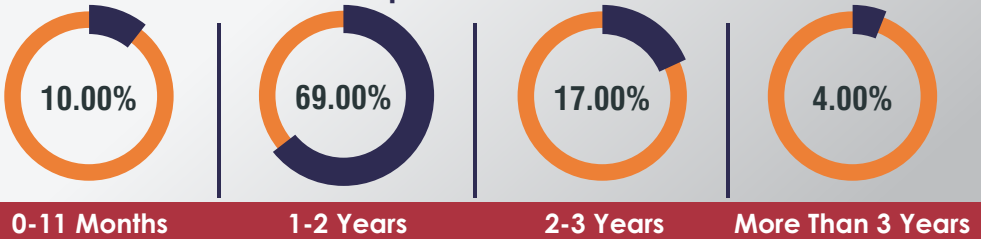
Gender Diversity



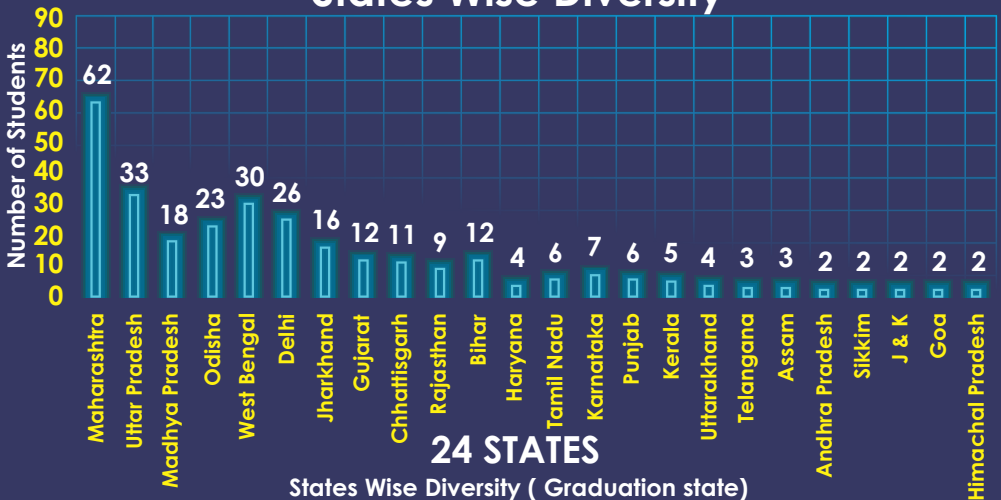
Number of Student Zone - Wise Diversity



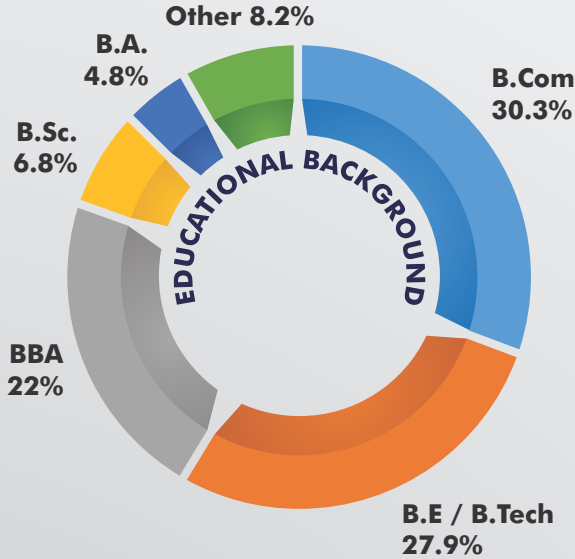
Past Work Experience of Our Students



States Wise Diversity



EDUCATIONAL BACKGROUND Batch : 2022



Placement Highlights Batch : 2020-22

Highest : 18 Lacs

Average : 10.8 Lacs

Highest Offer

INDUSTRY WISE PLACEMENTS



BFSI & Fintech
23 %



IT & ITES
25 %



Engineering & Projects / Logistics
13 %



Consulting
8 %



FMCG & FMCD / Retail
14 %



Others
2.2 %



E-Commerce & EdTech
10 %



Media & Comm
4.8 %

COMPENSATION OFFER BY INDUSTRY

Consulting

18 LPA

IT & ITES

18 LPA

FMCG/ FMCD

18 LPA

BFSI

16.7 LPA

Engineering & Projects

16 LPA

Manufacturing

12 LPA

E-Commerce

11 LPA

Admission Process

Eligibility

Any Bachelors Degree of minimum 3 years duration. Obtained at least 50% marks (45% marks in case of candidates belonging to reserved category) in the qualifying examination. Candidate should have appeared one of the entrance exam CAT/XAT/CMAT/ GMAT.

How To Apply

Application form is available at www.isbm.ac.in and must be submitted online with the application fee can be paid through Debit/ Credit card, and net banking.
(application fee is non refundable)

SELECTION WEIGHTAGE

While ISB&M, admissions are competitive, our selection criteria revolve around a candidate's ability to:

- ➔ Cope with demanding environment in ISB&M
- ➔ Candidate's ability to build career with MNCs and high profile Indian companies.
- ➔ Candidate's openness and ability to learn new social and cultural habits & values, those professional MNCs, especially seek.

In order to succeed in ISB&M, a candidate must develop learning attitude for a career and imbibe an open minded attitude towards exploring newer experiences & make serious efforts at self-development.

A. Weightage in selection process

1. **Score Card: 25%**
2. **Academics: 25%**
3. **GD&PI: 40%**
4. **Work Exp: 10%**

Admission Process

Scholarship and Rewards*

The institute has the provision for awarding the following scholarship and rewards to the deserving performers.

Merit scholarship

- 1] ISB&M awards Rs.1,50,000 to the TOP 20 students who obtain all of the following
 - 80% in CAT or XAT
 - 85% in 10th Standard
 - 85% in 12th Standard
 - 70% of equivalent CGPA in Graduation
 - CGPA of 5 & Above in 1st Trimester of PGDM program.
- 2] ISB&M awards Rs. 50, 000 Scholarship per year. For ISB&M undergraduate students (BBA, BB-CA and BE)

*Details on the Scholarship and Rewards - check website

Admission Calendar : 2023

Application Forms Open	04 th October 2022
Application forms Close	20 th January 2023
Early Bird (Application Fee Rs. 500/-)	4 th October to 4 th November 2022
Application Fee : Rs. 700/-	5 th November to 15 th December 2022
Application Fee: Rs. 1500/-	16 th December to 20 th January 2023
Group Discussion & Personal Interview	February 2023 Onwards
Admission Process Close Batch 2023-25	10 th April 2023

Group Discussion and Personal Interviews

The list of short-listed candidates for Group Discussion and Personal Interviews (GD & PI) will be posted on the website and also be intimated to the candidate by SMS, email, courier /speed-post.

Cities where GD & PI will be conducted : ←

- ↓
- North :** Allahabad, Chandigarh, Delhi, Dehradun, Jaipur, Varanasi, Lucknow
- East :** Bhubaneswar, Guwahati, Jamshedpur, Kolkata, Patna, Ranchi
- West :** Ahmedabad, Bhopal, Indore, Mumbai, Nagpur, Pune, Raipur
- South :** Bangalore, Chennai, Hyderabad, Vijayawada

PGDM IN Business Analytics

This Business Analytics program will help you gain the knowledge you need to turn your organization's data into a tactical asset to generate business value. Business Analytics is impacting businesses worldwide and Companies are on the lookout for professionals who are business ready in analytics. The Post –graduate program in business analytics by ISB&M Provides an unmatched opportunity for individuals to begin of shift their career in the exhilarating filed of Business Analytics.

Outstanding



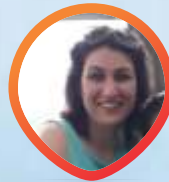
Diptiman Kar
Batch: 2006-08
Senior Consultant
Capco
London



Amisha Gupta
Batch: 2006-08
Business Architect
Discovery Limited
South Africa



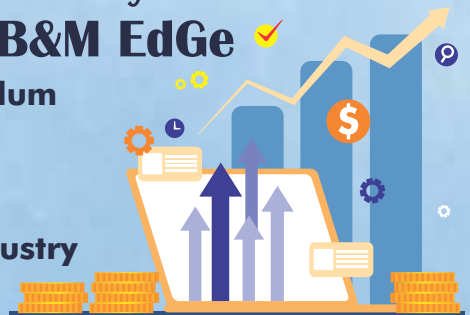
Sushant Majhi
Batch: 2006-08
Director & Head
Gravitas
Mumbai



Puja Rana
Batch: 2003-05
SAP
HCL America, Inc.
New Jersey

Business Analytics & ISB&M EdGe

- Globally Benchmarked Curriculum
- Best in Analytics
- Outstanding Faculty
- Global Alumni Network
- Curriculum co-created with industry



PGDM in Logistic & Supply Chain Management

Supply chain Management is a core function and back bone of all companies. It covers entire operation of a company from vendors/ Supplier to product /service manufacturing to sales and distribution.

In E-Commerce, a companies will fail if it has weak supply chain and logistics, over 65% of a company operating cost is supply chain.

It covers skills like forecasting, process analysis & value chain optimization and strategic cost optimization profitability are key issues.

ISB&M Supply chain programme is highly valued in industry for recruitment.

Eligibility :

**B.E, B. Tech., M.E, M.Tech, M.Sc, B.Sc,
B. Pharma, M. Pharma & Other,
Professional Degree**



Alumni



Divyanshu Yadav
Batch : 2009-11
**Director - Operation
Head
Flipkart**
🏠 Bengaluru



Shashi Jha
Batch : 2005-07
**General Manager
Mercedes - Benz AG**
🏠 Singapore



Ram Dhawad
Batch: 2008-10
**Director, BD, USA
DHL**
🏠 Chicago

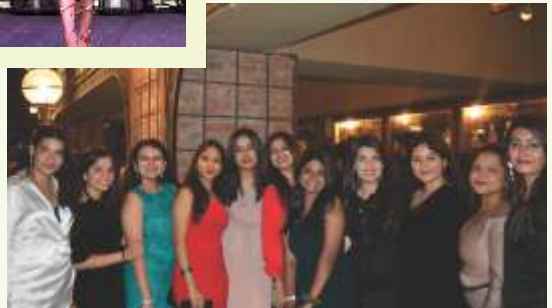


Anshu Rathi
Batch: 2005-07
**SAP MM Functional
Analyst
Vari**
🏠 New Jersey

SCOM Major Recruiters

PPG Asian Paints, Trident, Deloitte Consulting, TCS, Sutherland Global, Accenture, Blue Star, Hector Beverages, USHA International, PwC, Ernst & Young, TresVista, ITC, Hewlett Packard, Trinamix, Schlumberger, Britannia, Berkadia, Rosy Blue (ORRA Diamond), Wipro, Philips Lighting, UPL, HFCL, Britannia, British Telecom (BT Group), Avata, GEP Worldwide & Many More..

Life @ ISB&M





V. K. Bansal

ISB&M Corporate Connect



N. N. Rao



Dr. K Venkatesham



Dr. J. J. Irani



Achint Jain



Sahil Nayar



Poonam Ubveja



Roop Tiwari



Lucky Ali



KK



Amit Mishra



Akshy Kumar



Atif Aslam

ISB&M Exposure to Stardom



Neha Kakkar



Sanam



Akhil Sachdeva



Vishal - Shekhar



Palash Sen



Anupam Kher

ISB&M ALUMNI

RECOMMENDED

Their Own Family

Reena Raikar (2000 - 02)
Manager - L&D

Phillips Carbon, Iraq

BROTHER

Ketan Raikar (2001- 03)
Co-Founder & Managing Partner

PeopleSquare HR Consulting, Mumbai

Anupama (2001- 03)
Sr. Director - Global Talent Acquisition

Sutherland, Delhi

BROTHER

Sudipto Mitra (2002 - 04)

AVP & Regional Head

Sony Pictures Networks, Kolkata

Akash Mohan (2001- 03)

SVP

GIC, Singapore

SISTER

Akanksha Mohan (2006 - 08)

Rewards Consultant

Mercer, New York - US

Ankur Kapoor (2004 - 06)
General Manager-Product Head

Samsung, Mumbai

SISTER

Tulika Kapoor

2008 - 10

ASM

HSBC BANK, Pune

Shubhangana Kapoor

2008 - 10

Customer Success

Manager

Informatica, Bangalore

Kalyani Kasara (2005 - 07)
Marketing & Communications
Innovation Design & Visualisation Group

Tata Elxsi, Bangalore

BROTHER

Jaidev Kasara (2008 -10)

Group Account Manager

Network18 Media, Bangalore

Raj K Mishra (2006 - 08)

AVP

Hero MotoCorp, Gurgaon

BROTHER

Ajay Mishra (2009 -11)

Head - Supply Chain

Indusind Bank, Lucknow

Sandeep Naug (2005 - 07)

Head Of GTM Strategy

VerSe Innovation, Delhi

BROTHER

Sumeet Naug (2011-13)

Corporate Real Estate Consultant

JLL, Bangalore

Tanya Agnihotri (2015 - 17)
Sr. Business Analyst & Product Owner

HARMAN Intl., Bangalore

BROTHER

Keshav Agnihotri (2022-24)

PGDM - Marketing

ISB&M Pune

Shubham Jaiswal (2016 - 18)

Senior Cluster Manager

Aditya Birla Sun Life Insurance

BROTHER

Harsh Jaiswal (2022-24)

PGDM - Marketing

ISB&M Pune

This is an Illustrative List of Students Visit Website for Complete Details

ISB&M Alumni from Your College / City

City	Name	Designation	Company Name	Grad.	University
Delhi	Nisha Agarwal	Sr. Director HR	Edwards Lifesciences	BA	Jesus & Mary College
	Sudipto Mitra	Vice President & Regional Head	Sony Pictures	BA	Rajdhani College
	Zenobia Madan	Director HR	Whirlpool	BA	Lady Shri Ram College
	Ashish Musaddi	Global Head	Cipla	B.Com	Hans Raj College
	Songita Das	Sr. HR Manager	HiveMinds	BA	Miranda House
Pune	Pronob Jyoti Chetia	Director HR	Volvo Group	B.Sc	Fergusson College
	Shreyanshu Mukpaikar	VP Sales	Zee Entertainment	BA	Symbiosis College
	Sourik Sinha	Head- Brand	HSBC	B.Com	BMCC College
	Amrisha Soans	Vice President	Morgan Stanley	B.Com	Wadia College
	Siddharth Rattan	Director	Credit Suisse	B.E.	MES College of Engineering
Mumbai	Moonmoon Varma	Chief People Officer	Yum! Brands	BA	Sophia College
	Sanjana Kapoor	Associate Director	Snapdeal	BA	Jai Hind College
	Gayatri Kakkar	Senior Vice President - HR	Entertainment Network	B.Com	Sydenham College
	Samrat Dasgupta	Sr. Project Manager	Amazon	B.Sc	St.Xaviers College
	Arushi Agrawal	SAP Functional Consultant	TCS	B.Com	Mithibai College
Kolkata	Sagar Raval	Senior Analyst	OCS Services (India) Pvt. Ltd.	B.Com	K J Somaiya
	Oindrila Chakraborty	SVP Human Resources	Jio Studios	B.Com	South City College
	Saurabh Jain	Managing Partner, South	Havas Group	B.Com	Bhawanipur College
	Rahul Chandra	Head of Marketing	Stanley Black & Decker	B.Com	Scottish Church College
	Riddhima Puri	Director HR	Global Insurance Brokers	BBA	J.D. Birla Institute
Patna	Sourmava Chatterjee	Consultant	EY	B.Com	City CollegeKolkata
	Nitin Kishorepuria	Franchise Director	BMW Ventures	B.Com	Patna Commerce College
	Nishit Kumar	Sr. Manager, Operations	Amazon	BA	Magadh University
	Anand Sagar	Digital Transformation Strategy	Wipro	B.Sc	B.N.college
	Nipsita Jain	Operations Officer	RAK Bank UAE	B.Com	Patna Women's College
Lucknow	Shaiwalini Srivastava	Senior Technical Lead in SAP	HCL Technologies	B.Com	Magadh Mahila College
	Manoj Chowdhary	Sr. Director & Head	Grupo Bimbo	Mass.C	Lucknow University
	Tanushree Chakraborty	HR Analyst	Deloitte	B.Tech	Babu Banarsi Das Inst. of Tech.
	Gobind Singh	Associate Vice President	Purnartha SEBI	B.Com	City Group Of Colleges
	Akansha Chaturvedi	Sr. HR Specialist	JP Morgan Chase & Co.	B.Com	Mofial Nehru College
Kanpur	Anshul Chaudhary	Senior Analyst	EY - Parthenon	B.Com	National PG College, Lucknow
	Archanaa Singh	Senior Vice President-HR	Reliance Broadcast Network Ltd.	B.Sc	Christ Church College
	Manish Tiwari	VP - Strategic Alliance	Bajaj Allianz Life	B.Com	PPN College
	Sandeep Sarkar	VP - Experienced Recruitment	Credit Suisse	B.Com	Christ Church College
	Mayur Dhawan	Director	Julius Baer	B.Com	Christ Church College

ISB&M Alumni from Your College / City

City	Name	Designation	Company Name	Grad.	University
BBSR	B. Chandra Sekhar	Manager	Deloitte	B.Com	Utkal University
	Khiron Kumar Bishoyi	Advisory Consultant -SAP IBP	IBM	B.Tech	Gandhi Inst. of Tech. & Mangt
	Chinmayee Das	HR Program Manager	Amazon	B.Com	B.JB College
	Suman Sahu	Senior Relationship Manager	Bajaj Capital Ltd	B.Tech	Biju Patnaik University of Tech.
	Ankita Anand	Deputy Manager HR	Incedo Inc.	B.Tech	C.V. Raman College of Engg
Indore	Abhijit Mandal	Engineering Service Analyst	Accenture	B.Tech	Shiksha 'O' Anusandhan Univ.
	Kawaldeep Saluja	Deputy Vice President	ICICI Lombard	BBA	Christian Eminent Academy
	Siddharth Singh	Associate Vice President	Karvy Private Wealth	B.Com	Devi Ahilya Vishwavidyalaya
	Siddhant Maheshwari	Senior Key Account Manager	ZestMoney	B.Com	Renaissance College
	Shivayu Mandloi	Senior Financial Analyst	Honeywell	BBA	Prestige College
Bhopal	Pankaj Parihar	Chief Business Office	Conde Nast	BA	Bhopal School of Social Sci.
	Mona Kapoor	Talent Management	L & T Construction	B.E.	All Saint's School
	Sujeet Chhabra	Deputy Vice President	Axis Bank	B.E.	RGP Vishwavidyalaya
	Chitresh Saxena	Supply Chain Consulting	KPMG	B.E.	Jai Narain College of Tech.
	Vishal Anand	Sales Director	HCL Software	B.Com	St.Xavier's College, Ranchi
Ranchi	Saurav Fogla	AVP-Private Banking	HDFC Bank	B.Com	Grossner College, Ranchi
	Anupama Mansi	Sales Lead	Harman International	BA	Nirmala College , Ranchi
	Khushboo Agarwal	Business Consultant	Tech Mahindra	B.Com	Allahabad University
	Nisha Yadav	Country Sales Manager	Tata Motors	B.Tech	Motivational Pathway
	Shailini Rai	Partner Brand Manager - Google Assistant	Google	BCA	Banasthali Vidhyapith
Allahabad	Rishabh Arora	Branch Marketing Associate	LG Electronics	B.Com	Allahabad University
	Shivendra Mishra	Sr. Global Offering Manager	Honeywell International	B.E.	NIT Karnataka
	Kunal Malhotra	Senior Manager	Rupyy	BA	Loyola College
	Harshita Chauhan	Assistant Manager- HRBP	TCS	B.Sc	St. Joseph's College
	Lavanya Ravi	Industry Process Consultant	Dassault Systemes	B.E.	B. M. S. COE
Bangalore	Dr. Srikanth PB	Associate Director	Cognizant	B.E.	Savitri Bai Phule University
	Smriti Singh	Sr. Advisory Consultant	IBM	BA	Sacred Heart Convent School
	Aashit Prakarhar	Senior Brand Manager	Asian Paints	B.E.	Imperial Coll. of Engg & Research
Jamsh - edpur	Gaurav Agrawal	Product Manager	Haier Appliances	B.Com	Banaras Hindu University
	Sudha Singh	Assistant Manager	Tata Communications	B.Com	Banaras Hindu University
	Manasvi Gupta	Senior Manager	Anand Rathi	B.Com	Sunbeam College
	Mohammad Anas	Senior Analyst	EY- Parthenon	B.E.	Integral University

Life of Dignity



Raja Babber
Batch: 2001-03
Sr. Lead - Product Solution
S&P Global
New York



Shailesh Singh
Batch: 2002-04
Client Partner
Verizon Ent.
Singapore

ISB&M Pune Nande

S. No. 44/1, 44 1/ 2, Nande,
Pashan Sus Road,
Pune 412 115
7757029571
020 35012000/2001
admissions@isbm.ac.in

MIBM - Mulshi Campus

Mulshi Group of Institute
Gat No. 237-243,
Sambhave Tal Mulshi,
Pune 412108
020 35012000/2001
admissionsmulsi@isbm.ac.in

ISB&M Kolkata Campus

330/2 Pujali Trunk Road.
P.S. Budge Budge
Kolkata - 7000138
9830991821 / 9804866596
admissions.kolkata@isbm.ac.in

ISB&M Bangalore Campus

P. No. 241, Sompura Ind.,
Niduvanda, Nelamangala,
Bangalore 562132
8956831703 / 8197978484
admissions.b@isbm.ac.in

Information Office

Delhi

U-179, 1st Floor Shakarpur,
Near Laxmi Nagar,
Metro Station,
Delhi - 110092
7387755131

Lucknow

3rd Floor, Tekarees
Chamber, Ashok
Marg, Hazratganj
Lucknow-226001
8530093456

Bhubaneswar

Gr. Floor, Saheed Nagar,
Opp. Madhusudan
Law College
Bhubaneswar-751007
8956613749 / 8483961600